

**"Chesapeake
Brass Band"
CONCERT
WEDNESDAY**

COBBLESTONES

IS ON EVERYONE'S LIPS

Tidbits Overheard... Didjanos... All The Buzzzzz!



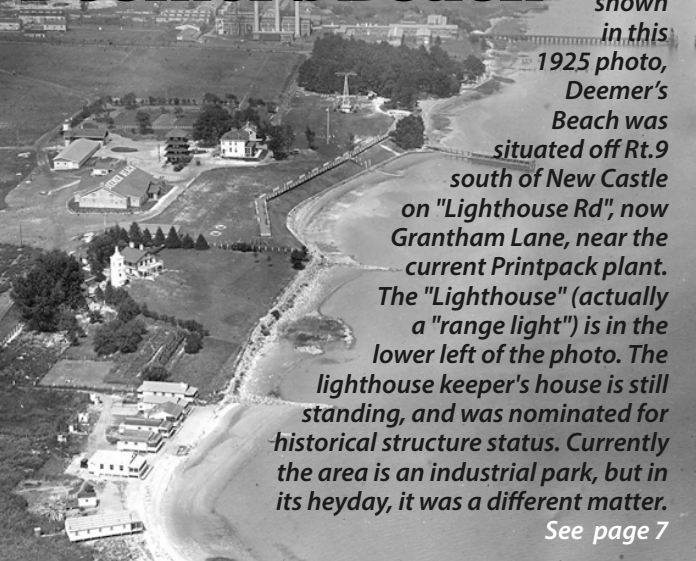
New
Rule
Page 8

Vol. 7 No. 22

Cobblestones Library Look for ▶ ◀ for links

August 21, 2016

Deemer's Beach



As
shown
in this

1925 photo,
Deemer's
Beach was

situated off Rt.9
south of New Castle

on "Lighthouse Rd", now
Grantham Lane, near the
current Printpack plant.

The "Lighthouse" (actually
a "range light") is in the
lower left of the photo. The

lighthouse keeper's house is still
standing, and was nominated for
historical structure status. Currently
the area is an industrial park, but in
its heyday, it was a different matter.

See page 7



update

The City Engineer is currently completing an evaluation of existing utilities within Delaware Street including an assessment of drainage and options to place "green" practices such as infiltration or bioretention to improve the water quality of runoff. The study will culminate in late October with conceptual designs for the rehabilitation of the roadway.



Among the findings to date was seepage into an aging brick sanitary sewer manhole which has since been repaired by the County. The sanitary sewer pipes themselves, though old, are still functioning adequately. Other findings include the presence of previously unmapped storm sewers that are unreachable due to the lack of access points. The City will be placing manholes in strategic locations on these storm sewers as part of the annual Citywide paving contract this fall or next spring. Once installed, special cameras will be inserted into the pipes which can be used to assess their condition.

The street surface, curbs, and locations of surface features such as signs and trees were previously surveyed. Upon completion of the above steps, construction plans and specifications will be prepared. At this time, the scope of work is envisioned to include new pavement, replacement of concrete curbs with granite, storm sewer improvements (depending on findings), brickwork, handicap ramps, and crosswalks on Delaware Street from the wharf to 3rd Street. Preliminarily, this work has been estimated to cost in excess of \$1 million. Start of construction will be contingent upon funding.

this week in HISTORY

21 Nat Turner, a former slave, led a violent insurrection in Virginia. He was later executed. 1831, **Venetian blinds** are patented. 1841, **Mighty (Dan) Casey** Struck-out in a game with the NY Giants! 1887, **William Burroughs** of St. Louis, patented his adding machine. 1888, **Arthur R. Eldred** became the first American boy to become an Eagle Scout. 1912, RCA Victor Records announced that sales of **Elvis Presley** records had passed the 400 million mark. 1976 the same year **Don't Go Breaking My Heart** by **Elton John & Kiki Dee** topped the charts.

22 War of the Roses ended with the death of England's King Richard III. 1485, **Ann Franklin**, the first female editor of an American newspaper, became the editor of the Mercury of Newport, RI. 1762, The **American colonies** were proclaimed to be in a state of open rebellion by **England's King George III**. 1775, **John Fitch's steamboat** completes its tests, years before Fulton. 1787, The **Mona Lisa** is stolen from the Louvre 1911, **Fred Astaire** and **Ginger Rogers** appeared, dancing, on the cover of "LIFE" magazine. 1938, **Make It with You** by **Bread** topped the charts. 1970

22 War of the Roses ended with the death of England's King Richard III. 1485, **Ann Franklin**, the first female editor of an American newspaper, became the editor of the Mercury of Newport, RI. 1762, The **American colonies** were proclaimed to be in a state of open rebellion by **England's King George III**. 1775, **John Fitch's steamboat** completes its tests, years before Fulton. 1787, The **Mona Lisa** is stolen from the

Louvre 1911, **Fred Astaire** and **Ginger Rogers** appeared, dancing, on the cover of "LIFE" magazine. 1938, **Make It with You** by **Bread** topped the charts. 1970

23 The printed streetcar transfer was patented by **John H. Stedman**. 1892, The statue of **"The Little Mermaid"** was unveiled in Copenhagen. 1913, **Bob Feller** made his pitching debut with the Cleveland Indians. 1936, In the Peanuts comic strip, **Sally** debuted as an infant. 1959, The first **picture of Earth** from the moon is taken by Lunar Orbiter 1. 1966, **Magic** by **Olivia Newton-John** #1 in 1980.

24 Mt. Vesuvius eruption buries the city of **Pompeii**. 79, **Gutenberg Bible** was completed. 1456, **British** sack Washington, DC, burning the White House and Capitol. 1814, **Waffle Iron** is patented by **Cornelius Swarthout**. 1869, First transcontinental non-stop flight by a woman, **Amelia Earhart**. 1932, Congress outlaws the **Communist Party** in the US. 1954

25 Hundreds of colonists from France arrived in Louisiana. 1718, **Joseph Gibbons** received a patent for the seeding machine. 1840, **Natl Park Service** was established. 1916, **Ethelda Bleibtrey** became the first woman to win an event for the US in Olympic competition. 100-meter freestyle swimming. 1920, **Ben Hogan** won his first major golf title. 1946, **Elton John** made his **US concert debut** at the Troubadour. 1970, **Ghostbusters**, by Ray Parker, Jr., started week #3 at the top. 1984

26 Michelangelo was commissioned to make the Pieta., 1498, The school board of St. Louis, authorized the first **public kindergarten**. 1873, Congress passes the **19th Amendment**, granting women the right to vote. 1920, **Red Barber** announced the first televised major

league baseball game. 1939, **David Eisenhower** wrote his final sports column for the Philadelphia Bulletin. The article was about the Phillies. 1973, **Grease** by **Frankie Valli** topped the charts. 1978

27 Clara Barton becomes the first female federal employee to achieve equal status. 1855, The first oil well was successfully drilled by **Col. Edwin L. Drake** near Titusville, PA. 1859, **Tarzan of the Apes** was published by writer **Edgar Rice Burroughs**. 1912, The owner of **Acme Packing Co.** bought a pro football team for Green Bay, WI. **J.E. Clair** paid tribute to those who worked in his plant by naming the team the Green Bay Packers. 1921, **President Reagan** announced that the first citizen to go into space would be a teacher, **Christa McAuliffe**. She died in the Challenger disaster on Jan. 28, 1984

WHAT'S INSIDE

Sports, Birthdays, Phillies & Football	2
Recycling Workshops	2
Library, Sr. Center, & Bus trips	3
Art on the Green, Meet Sen. Poore	3
Mojito Shrimp, Easy Street to enjoy	4
Last Concert, Post Card Sale & UofD Football	4
Art Classes & River Towns Ride & Festival	5
Recipes needed & City Job Offering	6
Police phone numbers & Meet Jada	7
Vote Readers' Choice, Weather & Save the Date	8
Muckless Marsh Walk & Preservation 50	9
Jazz Jamm	10

Bull Hill Boat Club Annual Labor Day Picnic Sun. Sept. 4th • 4 PM until Dusk. For info call 521-089

Porto-Fino Pizza

& Restaurant ★ River Plaza New Castle ★ 302-322-3330

don't be sidelined

MONDAY NITE
BAR SIDE ONLY

1/2 PRICE WINGS



SATURDAY COLLEGE
BAR SIDE ONLY

Coors LIGHT DRAFTS ALL DAY

Sunday 1/2 PRICE APPS

SUNDAY NFL
BAR SIDE ONLY

Miller Lite DRAFTS ALL DAY

Phillies

as always our famous

PIZZA ★ WINGS ★ SALADS ★ BURGERS

YOUR FAVORITE GATHERING PLACE FOR 32 YEARS

Phillies

57-66



Date	Opponent	Time	Broadcast
Sun, 8/21	Cardinals	1:35p	CSN-P, MLB.TV
Tue, 8/23	at White Sox	8:10p	CSN-P, MLB.TV
Wed, 8/24	at White Sox	8:10p	CSN-P, MLB.TV
Fri, 8/26	at Mets	7:10p	CSN-P, MLB.TV
Sat, 8/27	at Mets	7:10p	CSN-P, MLB.TV
Sun, 8/28	at Mets	1:10p	CSN-P, MLB.TV

► [FULL SCHEDULE](#)

COMCAST
CSN 35-847 MLBN 738-859
TCN 8-846 ESPN 26-850

FIOS
CSN 76-576 MLBN 86-580
TCN 99-846 ESPN 70-570

Check out all currently available [Phillies ticket options.](#)

Condolences to
THE
Briggs family

NASCAR

► **NASCAR Sprint C.**

7/31 Pennsylvania 400 Pocono Raceway **Chris Buescher**
8/7 Cheez-It 355 **Denny Hamlin**
8/20 Bass Pro Shops NRA Night Race-Bristol Motor Spdwy 8p
8/28 Pure Michigan 400 2p - Michigan International



Happy Cobblestone Birthday

Belated Sat 8-13 **Alice Riehl**

Mon 8-22 **Kim Burgmuller - Mike Plaisted**

Tues 8-23 **Barb Winkler - Judy Guttenplan**

Wed 8-24 **Anne Marie Dupre Fri 8-26 **Bruce Burke****

Sun 8-28 **Debbie Collins - Stacy Rock - Mike Ross**

Anniversaries

Wed 8-24 **Nancy & Paul Freebury**

Sun 8-28 **Laura & Pete Toner**



Birthday or Anniversary approaching?

Tell The Teditor flytedb13@comcast.net

Notable this week 21st Senior Citizen's Day Count Basie*112 (1984), Chris Schenkel*93 (2005), Wilt Chamberlain*80 (1999), Kenny Rogers-78, Jackie DeShannon-75, Alicia Witt-41 **22nd Be an Angel Day** - **Nail Tooth Fairy Day** - **Daffodil Day** Dorothy Parker*123 (1967), Ray Bradbury*96 (2012), H. Norman Schwarzkopf*82 (2012), Valerie Harper-76, Bill Parcells-75, Cindy Williams-69, Tori Amos-53, Howie Dorough-43 **23rd Go Topless Day** - **Valentino Day** Gene Kelly*104 (1996), Vera Miles-87, Barbara Eden-85, Sonny Jurgensen-82, Ronny Cox-78, Shelley Long,-67, Rick Springfield-67, Kobe Bryant-38 **24th Wayzgoose Day** - **Natl Waffle Day** Durward Kirby*105 (2000), David Freiberg-78 Jefferson Starship, Gregory Jarvis*72 (1986), died in the Challenger, Gerry Cooney-60, Steve Guttenberg-58, Cal Ripken Jr.-56, Craig Kilborn-54, Marlee Matlin-51 **25th Kiss and Make Up Day** Pogo's Walt Kelly*103 (1973), Leonard Bernstein*98 (1990), George Wallace*97 (1998), Sean Connery-86, Regis Philbin-85, Tom Skerritt-83, Tim Burton-58, Billy Ray Cyrus-55, Blair Underwood-52, Claudia Schiffer-46 **26th Natl Dog Day** - **Women's Equality Day** Albert Sabin*110 (1993), Benjamin Bradlee*95 (2014), Geraldine Ferraro*81 (2011), Christopher Burke-51, Macaulay Culkin-36 **27th Tug-of-War Day** - **Just Because Day** Lyndon Baines Johnson*108 (1973), 36th U.S. President, Mother Teresa*106 (1997), Martha Raye*100 (1994), Ira Levin*87 (2007), Daryl Dragon-74, "Captain & Tennille", Tuesday Weld-73, Paul Reubens-64

RECYCLING REGULATIONS



Proposed Universal Recycling Regulations Public Workshops

Division: Waste and Hazardous Substances

The Department of Natural Resources and Environmental Control (DNREC) Division of Waste and Hazardous Substances (DWHS) will hold public workshops on proposed new Universal Recycling Regulations.

The purposes of the proposed regulations are to ensure: that collection services for recyclable materials are consistent with the law; the collected recyclable materials are not landfilled or incinerated; the recyclable materials are properly processed and enter the marketplace; recycling in Delaware can be effectively measured; and that waste diversion is maximized through the reduction of solid waste deposited in our landfills.

The workshops will be held on: **September 6th** at **The Bear Library**, 101 Governor's Place, Bear, DE. 19701; **September 7th** at **DNREC Lewes Field Office**, 901 Pilottown Road, Lewes DE. 19958; and **September 14th** at **DNREC, 89 Kings Highway SW**, Dover, DE. 19901. All workshops will be held from **3 - 4:30p.m.**

2016 PRESEASON SCHEDULE

HOME	AWAY	AWAY	HOME
WEEK 1 W 17-9	WEEK 2 W 17-0	WEEK 3 SAT. AUG 27 7:00	WEEK 4 THU. SEP 1 7:00
CSN COZI 94 WIP	CSN COZI 94 WIP	NBC10 94 WIP	NBC10 94 WIP

PLUS ► REDSKINS and ► RAVENS

AUGUST at Our Senior Center

Mon 8-22 10 Bayada: "Keeping you Healthy" Tues 8-23 12:30 Food Distribution

Wed 8-24 8:30 Atlantic City

Thurs 8-25 9 Stand by Me Financial Coach 12:30 Shop Rite 4 Movie Club Fri 8-26 12 Entertainment: Bruce Anthony

"Where Friends Gather"

▶ New Castle Senior Center
amazon smile
Click ▶ HERE

MON

9-3 Billiards
9 Pool Exercise
9:30 Park Walk
10 Crafty Seniors
12 Lunch
12:30 Mah Jongg
1 Chair Yoga

TUES

9-3 Billiards
9:30 Shanghai
10 Bingo
12 Lunch
1 Strength Building/
Exercise

WED

9-3 Billiards
9:30 Park Walk
11 Line Dancing
12 Lunch
12:30 YMCA
Diabetes Prevention
1 Pilates

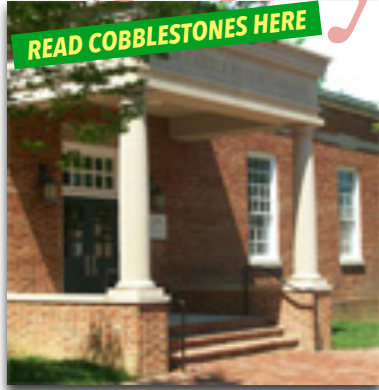
THUR

9-3 Billiards
9:30 Shanghai
9:30 Bridge
10 Games w/Tom
12 Lunch
12:30 Super Market
1 Zumba Gold
2 Qi Gong/Tai Chi
5:30 Yoga
5:30 Bible

FRI

9-3 Billiards
9:30 Park Walk
9:30 Knit/Crochet
10 Bingo
10 Mah Jongg
10:30 Beginner's/
Arthritis Exercise
12 Lunch

the New Castle library



- 8/22 **JOB CENTER/10a**
Walk in Job & Business Assistance
PAWS*/7p
- 8/24 **Tech Knowledge-Y Lab/2:30-4:30p**
- 8-26 **Adult Coloring/11a**

424 Delaware St - New Castle DE 19720
302-328-1995

▶ www.nccdlib.org/newcastle

Mon 10-9 Tues 10-9 Wed 2-9 Thurs 2-9 Fri 10-5 Sat 10-5 Sun Closed



Sr. Center Charter Bus Trips

Payment is due at the time of sign up.

If you need to cancel your trip money will only be refunded if there is someone to take your place.

August 24 Atlantic City - New Info!

8:30-5:00. Cost-\$22, includes bus and driver's tip. We will be going to the Taj Mahal Casino, and the cost of \$22 includes the bus, driver's tip and \$20 is slot dollars.

September 14 Rainbow Dinner Theater

"Is there Life after 50?" 9:30-5:00. Cost-\$72, includes show, lunch, gratuity, bus and driver's tip. Alcoholic drinks are not included.

October 26 Dutch Apple Dinner Theater

"Anything Goes" 9:30-5:00. Cost-\$73, includes show, lunch, gratuity, bus and driver's tip. Alcoholic drinks are not included.

Sign up early for your favorite trip!

Trips will be cancelled at least two weeks in advance if there is not enough response.

YOU'RE INVITED
TO SPEND AN EVENING WITH

SENATOR NICOLE POORE
TO
MEET - GREET - EAT
(& DRINK)

AT THE HISTORIC DAVID FINNEY INN NEW CASTLE, DE

FOOD BY CHEF KIP POOLE & THE WILLIAM PENN CULINARY KIDS

WITH A SPECIAL VISIT FROM CONGRESSMAN JOHN CARNEY

CONGRESSMAN JOHN CARNEY is appearing at this event only as a special guest, and is not asking for funds or donations.

Your \$35 Contribution provides dinner and a drink ticket for Wine or Beer*
(more available to purchase)

Extra drink ticket if the Senator has never met You...Bring Someone she's never met For a Selfie and You Both get one!

*Must Be 21 or older to receive drink tickets

You must RSVP to guarantee a spot - please email terry@socialmediaproxy.com or call Terry at 302-322-6392

Checks Should Be Payable to: Friends of Nicole Poore

46th ANNUAL ART ON THE GREEN ARTS & CRAFT SHOW

September 24th
10:00am to 4:00pm
Rain Date October 1, 2016
Battery Park

3rd and South Streets - City of New Castle

FREE PARKING - FREE SHUTTLE BUS

903 Delaware St - New Castle School

Rts. 273 & 141 - New Castle Baptist Church

Non Profit - Food Vendors - ATM in park

Sponsor - Carman Alpha Romeo Fiat

www.artonthegreende.net

Call- 302/528-2377 artonthegreende@aol.com



See the THE WEEKLY for Full Schedules

Thurs 8/22 Planning Commission Mtg. 6:30PM

Mon 8/29 Municipal Services Comm. Mtg 4pm

261 Chestnut St,

Mon 9/5 Tree Advisory Comm. Mtg 4pm

▶ <http://newcastlecivil.delaware.gov/>

mojito shrimp



Simple to make and quick to cook, these snappy shrimp are inspired by the cocktail of the same name, and the marinade includes many of the same ingredients.

- ¼ cup white rum
- ¼ cup mint leaves, coarsely chopped
- ¼ cup lime juice
- 2 tbsp olive oil
- 1 tbsp sugar
- Zest of 2 limes
- ½ tsp salt

1 lb medium shrimp, shelled and deveined

Soak 4 bamboo skewers in water for 30 minutes. Prepare a gas or charcoal grill for direct high-heat grilling (alternately, preheat the broiler). In a medium bowl, whisk together the rum, mint leaves, lime juice, olive oil, sugar, lime zest and salt. Add the shrimp and mix to coat, then let stand for only 10 minutes. Thread the shrimp on the skewers, dividing evenly, and grill or broil, turning once, until bright pink and sizzling, for 4 to 5 minutes. Serve hot.



This Denver cocktail mixes Byrrh with gin, lemon, port and muddled berries for a summer ready treat that's refreshing without being overly sweet.

Mixins' for one ½ oz your favorite gin · ¾ oz Byrrh* · ¾ oz lemon juice · ½ oz simple syrup · 4 dashes bitters · ½ oz port

Garnish skewered blackberry and 1/2 strawberry, mint sprig and a short straw

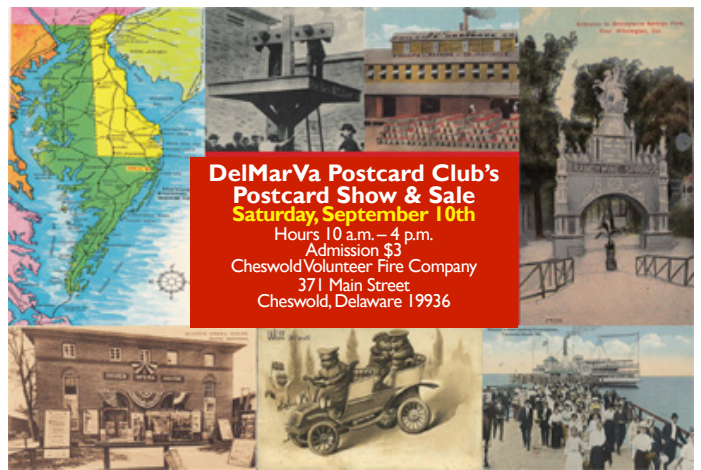
Make it

- ◆ In a mixing tin, muddle the berries and add in the gin, Byrrh, lemon juice and simple syrup.
- ◆ Add ice and shake until chilled and diluted.
- ◆ Strain into a double Old-Fashioned glass and add pebble ice or cracked ice.
- ◆ Dash the Peychaud's bitters over



easystreet

the ice and top with the port. Garnish with a mint sprig, a skewer of a blackberry and a half strawberry and a short straw *Byrrh is a mild aperitif, based on red wine and flavored lightly with quinine



DelMarVa Postcard Club's Postcard Show & Sale
Saturday, September 10th
 Hours: 10 a.m. – 4 p.m.
 Admission \$3
 Cheswold Volunteer Fire Company
 371 Main Street
 Cheswold, Delaware 19936

IMAGES clockwise from map of DelMarVa Peninsula: Delaware whipping post, abolished many years ago, New Castle, Del.; Canning Tomatoes, Phillips Packing Co., Cambridge, Md.; Entrance to Brandywine Springs Park, near Wilmington, Del; Steamer Louise landing excursionists, Tolchester Beach, Md.; Cats in a car, artist unknown; Nixon's Opera House, Dover, Del

Information (302) 734-9259

<p>Thu, 9/1 Delaware State - H 7p Sat, 9/10 Lafayette at Easton, Pa. 6p Sat, 9/17 Wake Forest at Winston-Salem, N.C. 6:30p ESPN3 TV Sat, 10/1 James Madison* at Harrisonburg, Va. 1:30p Sat, 10/8 Maine (Parents & Family Weekend)* Delaware Stadium, 3:30p Sat, 11/19 Villanova (Battle of the Blue)* Delaware Stadium 1p</p>	<p>Sat, 10/15 William & Mary* at Williamsburg, Va. 3:30p Sat, 10/22 Stony Brook* Delaware Stadium 1p Sat, 10/29 Towson (Homecoming)* Delaware Stadium 3:30p CSN TV Sat, 11/5 Albany* at Albany, N.Y. 1p Sat, 11/12 Richmond* at Richmond, Va. 3:30p CSN TV</p>
--	--

* Conference Games

the summer concert series

A BIG Thank You

To all our sponsors, food vendors
 And to you...our guests on
 Battery Park...see ya next summer!

free to the public!

wednesday nights 6:30-8pm

LAST ONE

August 24th
Chesapeake Brass Band

Presented by: The New Castle Community Partnership (NCCP)

Sponsored By:

Also Sponsored in Part By: The Trustees of the New Castle Common, The City of New Castle, The Anthony and Catherine Fusco Foundation, St. Anthony's Club, Sons of Italy-St. Gabriel's Lodge & Generous Individual Donors

YOUR Food Favorites - Plum Pit - Mama Mia - Penn's Bistro!

Concerts will be canceled in inclement weather - check New Castle Weekly Facebook Page, NCCP Facebook Page, and New Castle City website on the day of concert. For more info, go to HistoricNewCastle.com, or email NewCastleCommunityPartnership@gmail.com.



Artist Summer Fun Bash Classes

Join with us, one of New Castle International Resident Artist That brings Art Classes to all ages starting from 4 +.

Junior Classes

We will work with kids to their ability and interest. We will help the child develop their creative interests and teach proper technique in various arts medium. Four Weeks Session 40 - 90 Minutes Class Curriculum: Color Pencils, Pastels, Crayons, and Water Colors, appropriate for age group.

Senior Classes

In this class we explore drawing and painting from still life to horticulture landscape in various media. Four Weeks Session Two hour Class Here you have a chance to explore Pencil, Charcoal, Ink, Watercolors and Pastels and understand appropriate techniques to use with each. One-on-one instruction will follow a brief discussion so you will have a chance to develop your style and explore your personal interest.

Classes are run by Rekha who is an Artist and a Graphic Designer and brings to Delaware the Cultural and Artistic discipline from Pratt. Her specialty is Painting, Sculpture and Design. The special characters of her work is the surrounding - the small & tiny details which when collected together makes the environment look complete. She captures those moments in her colors & drawings and freezes them.

A successful working artist for over 20 years, she has exhibited her work in a group as well as solo shows both locally and internationally. She holds masters degree in Fine Arts and Communications Design, from the Pratt Institute, New York, and University of Sindh. A Gold Medalist.

Worked as a Lecturer of Fine Arts. Currently teaching Art Classes in New Castle, Delaware, to all age groups starting 4+.

For additional information please visit coloursinbear.com

302 525 8056
info@coloursinbear.com



Experience the WilmU Difference



- Top-ranked online programs
- Expert instructors, exceptional education
- Flexible course schedules and formats
- Supportive, student-centered focus

Find out how to get started at:
wilmu.edu/StartNow



Saturday, Oct. 1st 11:30am-5pm

Celebrating historic New Castle & Delaware City

The fourth annual **River Towns Ride & Festival** is a one-day joint festival held between the two historic Delaware waterfront towns of New Castle and Delaware City.

This year's event will be held on Saturday, Oct. 1, from 11:30am-5pm. The two towns are 10 miles apart and connected by the bike-friendly corridor of Route 9. Therefore, the event will feature a bicycling component that will have riders cycling between the two destinations.



Omelets to Homemade Baked Goodies to start the day to our Famous Signature Sandwiches

*Caroline's
Always made fresh with homemade care.*



Tue - Thu: 8 am - 4 pm
Fri: 8 am - 4 pm ~ 6 pm - 9 pm
Sat: 8 am - 4 pm



**We've Gotten Many Recipes
For the NCHS Cookbook Fundraiser
(But not yours!)**

Send us your favorite family or historic recipe, with a little background, (and typed in an email if at all possible) with your name and contact info. Email them to Terry@SocialMediaProxy.com, or send them to Terry Gormley, 136 E. 2nd Street, New Castle, DE

Get it to us by August 31st!

“A weed is a plant that has mastered every survival skill except for learning how to grow in rows.”
Doug Larson

Health/Housing Code Enforcement Constable

Immediate full-time position with the City of New Castle. Responsibilities include, but are not limited to: inspecting and investigating dwellings and other buildings, vacant lots and yards for property maintenance and sanitary code compliance; ensuring safe and sanitary conditions including the abatement of nuisances; participation in Board of Health proceedings and prosecution of code violations in the Justice of the Peace Courts. Procedural knowledge of court system required. Excellent communication, organizational and record keeping and computer skills are required. Combination of education and experience equivalent to high school degree or GED. Prior work related experience required. Hourly rate \$21.29 plus a generous benefits package. Applications are available M-F 9am-4pm at: City of New Castle, 220 Delaware Street, New Castle, De. 19720 or Fax resume to 302-322-9814 or email Tsimmons@newcastlecit.com
City of New Castle is an equal opportunity employer.



Open 9am-5pm  Monday - Saturday (closed Sundays)

Quality Fruits & Vegetables
Local Honey

Local meats, milk, eggs and cheese

Fresh baked goods

Unique specialty foods

always Friendly service with a smile!



Ask about our discount days!



BELLANCA AIRFIELD MUSEUM
and the
DELAWARE AVIATION HALL OF FAME

**OPEN 2nd and 4th SATURDAY
JUNE THRU OCTOBER**

From 11 to 3 p.m. Free admission

**MODEL TRAIN EXHIBIT, VINTAGE AIRCRAFT,
DISPLAYS, MOVIES AND LECTURES**

Rte. 273 & CENTERPOINT BLVD. NEW CASTLE, DE

For information and group visits call
(302) 325-1805 or (302) 999-8623

Visit our web site at www.friendsofbellanca.org

Join us on Facebook at: **Friends of Bellanca Airfield**



To help serve the community and citizens of New Castle City in a more timely fashion, the police department would like to remind the citizens of some **important police phone numbers.**

Any Emergency Dial 911

Non- Emergency (police response needed/wanted):

573-2800

General police questions or information:

City Police Station 322-9800

EXAMPLES

Dial 911 for any police emergency or medical emergency.

911 should be called anytime an immediate response is needed. (ie. anything in progress, suspicious vehicles/persons)

Dial 573-2800 when you want a police response but the situation isn't considered an emergency. (ie. Criminal mischief to property or vehicle, rule violations in Battery Park, neighbor disputes, late reported complaints)

Dial 322-9800 to reach the New Castle City Headquarter to contact specific officers or any general questions you need answered. Our clerks do not have the capability to dispatch officers to complaints.

If a citizen ever has any confusion as to what number to call, please dial 911.



Make a donation to the Goodwill Fire Company and help us to continue helping our community!
GWFC18.COM



Home for Sale by Owner



Old New Castle - Great New Price \$229,000

2-Story attractive detached home. Wonderful options - live in one apt. & rent the other apt., or rent both apts. for a complete investment opportunity. 1st Floor, 2 bedroom Apt. and 2nd Floor, 1-bedroom Apt. Quiet pretty street, separate entrances, large backyard, off-street parking, storage building, washer/dryer facilities for both apts. Vinyl siding, front porch, rear deck, can also be converted back to a single-family home with up to 5 bedrooms.

Call now to schedule an appointment - 302.328.7844



Hi, my name is *Jada* and I am a 5 year old terrier mix who arrived at the Brandywine Valley SPCA as a stray. I didn't have the best life before I arrived here but now I am making everyone fall in love with me- maybe you will be the next to fall? I have soft, sweet eyes that I hope will draw you to me. I sat nicely for my photographs and tilt my head adorably when you talk to me. Come meet me!

Click [HERE](#) to learn about all my friends on South Street.



Brandywine Valley SPCA - 600 South Street, New Castle, DE 19720 Phone: (302) 516-1002



Deemer's Beach

Deemer's Beach was the extravagant project of Seldon S. Deemer.

He was the founder and owner of Deemer Steel Casting Co. in New Castle, making him one of the richest men in New Castle. In 1923 Deemer sold his interest in the steel plant and looked for an investment to occupy himself. Few acquaintances of Deemer, known as a philanthropist interested in the activities of children were surprised when he decided to build an amusement park-beach in the area. The cost was reported at \$150,000.

"It will equal if not surpass Coney Island," Deemer predicted in a newspaper story. About 100 acres would be used stretching from river frontage of three-quarters of a mile to a trolley car line from Wilmington to Delaware City. Also included were a stone retaining wall and the promenade and bathhouses and a hotel -- but it was only part of Deemer's park. ...According to

James Eliason Jr., longtime resident, Deemer had contractors build a jetty in the river that encircled the beach and made a pool. At low tide, the pool was completely protected; at high tide water washed over the jetty bringing fresh water into the pool.

A boardwalk ran along the top of the jetty. At high tide, water would cover the jetty, but not the boardwalk. The amusement park had a merry-go-round, scooter cars, a model railroad and a whip, Deemer recalls.

A marathon dance in 1931 attracted the attention of thousands

Late in the 1920s, the Delaware River was becoming too polluted for swimming. This was the beginning of the end for not only Deemer's Beach, but also other riverfront pleasure spots such as Augustine Beach and Bayview Beach.

More history at: <http://www.nc-chap.org/chap/>



VOTE for



New Castle

- [Arts and Entertainment](#)
General Entertainment > **The Cobblestones**
Thereafter > **The Grand Opera House**
Theatre Group > **Fearless Improv**
- [Auto](#)
Motorcycle Shop > **Rommel Harley Davidson**
- [Beauty and Wellness](#)
Facial > **Fresh Faced Skin Care**
- [Cheap Eats](#)
Crab Cakes > **Nora Lee's**
Delicatessen > **Capriotti's**
Diner > **Arner's**
Food Truck > **Maui Wowi of Delaware**
Hot Dog > **The Dog House**
Pizza > **Porto-Fino's**
Sandwich Shop > **Ioannoni's**
- [Fashion](#)
Designer Jewelry > **Bridgewater's**
- [Great Meals](#)
Italian > **Porto-Fino's**
New American > **Jessop's**
- [Local Flavor](#)
City Tours > **Historic New Castle**
or **Joslin's Cobblestones**
Festival > **Separation Day**
Local Blogger > **Joslin's Cobblestones**
- [Local Services](#)
Accounting > **John DiMondi, Whisman Giordano & Associates, LLC**
Banking > **M&T Bank**
[Nightlife](#)
Beer Selection > **Jessop's**
Neighborhood Bar > **Porto-Fino's**
Bowling > **Bowlamra**
- [Real Estate](#) > **Marianne Caven**
- [Shopping](#)
Garden Center > **Rose Hill Plantery**
Jewelry Store > **Bridgewater's**
- Schools > **Colonial School, St. Peter the Apostle**
- [Specialty Food and Drink](#)
Bakery > **Desserts by Dana**
Coffee Shop > **Trader's Cove**
Cupcakes & Desserts > **Desserts by Dana**
Farmers' Market > **New Caste Farmer's Market**
Ice Cream Shop > **Dairy Palace**
- [Wedding](#)
Engagement/ Wedding Rings > **Bridgewater**
Wedding Venue > **Historic Penn Farm**

NEW RULE
Only one
vote per
subcategory,
per
registered
email
address
for the
duration of
the contest.



1BR apartment
in the heart of New Castle on **Delaware Street**. Just a stones throw from Battery Park, shopping and dining! 1 BR, recently renovated, hardwood floors. Updated and very clean - \$950 per month, tenant pays heat & hot water, no smoking or pets.
Available August 1st
Call Len at **302-561-0408**



- 8-24
LAST Summer Concert
- 8-27
TRUSTEES ELECTION
- 8-28
NC Antiques Show
- 9-23
Jazz Happy Hour - NC SrCenter
- 9-24
Art on the Green
- 10-1
Rivertowns Ride
- 10-9
NC Area CROP Walk
- 10-14
Hauntings in History begins
- 10-15
NC Senior Center Harvest Bazaar
- 12-10
Spirit of Christmas



The very best
in dining out
is right here ON
The Wharf

TIDES & CURRENTS				
Reedy Point Tides				
	h	m	ft	cm
21	02:04	AM	6.3	192
Su	09:20	AM	0.0	0
	02:33	PM	6.0	183
22	09:42	PM	0.2	6
	02:53	AM	6.2	189
M	10:07	AM	0.0	0
	03:23	PM	6.0	183
23	10:37	PM	0.3	9
	03:47	AM	6.0	183
Tu	10:56	AM	0.1	3
	04:17	PM	6.0	183
24	11:35	PM	0.4	12
	04:46	AM	5.7	174
W	11:50	AM	0.2	6
	05:17	PM	6.0	183
25	12:35	AM	0.5	15
	05:49	AM	5.5	168
Th	12:47	PM	0.3	9
	06:21	PM	6.0	183
26	01:37	AM	0.5	15
	06:54	AM	5.4	165
F	01:46	PM	0.3	9
	07:26	PM	6.0	183
27	02:39	AM	0.5	15
	07:58	AM	5.4	165
Sa	02:46	PM	0.3	9
	08:28	PM	6.1	186

	Sun	Mon	Tue	Wed	Thu	Fri	Sat
21	6:20am	7:51pm					
22	6:21am	7:49pm					
23	6:22am	7:48pm					
24	6:23am	7:46pm					
Last Qtr: 11:42pm							
25	6:24am	7:45pm					
26	6:25am	7:43pm					
27	6:26am	7:42pm					

Handy Man Painting

Ed Foraker

Clean out: Gutters, Attics, Basements, Garages

No Job To Small

Free Estimates Low Prices

302-379-9122



Discover the Delaware Bay with us this August

Sign up now for FREE, fun, family programs!
Muckless Marsh Walk

Wednesday, August 31, 8a - 9:30a

Location: St. Jones Reserve 818 Kitts Hummock Road Dover, DE

Requires pre-registration.
To register contact 302-739-6377 or email
Margaret.Pletta@state.de.us



Office:
302.429.4500



MARIANNE CAVEN

302.588.7410

Email: mcaven@psre.com



Wednesday Concerts on the Delaware & Battery Park!

Last Concert for 2016!
8/24 Chesapeake Brass Band
Thanks to "The Big Package" for the great concert last week!

CITY SINGLE

104 Brylgon Avenue

Spacious 4 bedroom with first floor powder room, porch, detached garage, large lot.

\$165,000

See MLS #6839365



YOUR BUSINESS AND REFERRALS ARE APPRECIATED.
Call for information on our current inventory of homes!

Dedicated to Your Success and Satisfaction!



Celebrating the 50th Anniversary of the National Historic Preservation Act

How ~~Why~~ did the chicken cross the road?

Carefully.

Follow these rules of the road or you may not get to the other side.

- Cross only at crosswalks or intersections with signals or traffic signs.
- When walking at night, carry a flashlight or reflective items.
- Use sidewalks. If there isn't one, walk facing traffic as far off the edge of the road as possible.
- Be patient. Wait for cars to stop before stepping into a crosswalk.
- Do not walk under the influence of drugs or alcohol.
- Don't hitchhike.

Violators of these rules can be fined up to \$75.

WALK SMART. ARRIVE ALIVE DE | ohs.delaware.gov/pedestrian.shtm

Penn's Place

An Authentic Colonial Destination to Meet, Eat, Drink, Shop and Be Merrie

Located in Downtown Historic New Castle, DE

Featuring:

- Local Artisan Creations
- Free Wi-Fi
- Soups, Salads & Sandwiches
- Secret Beer & Wine Garden
- Coffee, Lattes & Pastries
- "LiveEntertainment" most Saturday evenings 6-8pm
- Private Event Space



Enjoy a one-of-a-kind retail shopping experience featuring a gallery of local artisans collectively gathered under one roof. Here you can meet that artisan and customize and personalize that unique gift for that special someone.

Fabulous LIVE 5 MUSIC Fridays

- with Mike Shilling This Friday!
- Enjoy \$5 on glasses of wine and bottled beers from 5-7pm... paired with a complimentary cheese tray... in the Secret Garden weather cooperating... or in The Muse.
- A great way to kick-off the event season in
- Historic New Castle...and a great way to gather before dinner...

SATURDAY @ The Muse



Enjoy **CLASSIC COVERS NIGHT** with

Dr. J

Aug 27th 6pm
\$5 cover



Penn's Place

206 Delaware Street ★ New Castle, DE 19720 ★ 302-322-6334 ★ www.pennsplace.net

One Night You'll Never Forget

Rob Zinn Quartet

J
A
Z
J
A
M
M



\$20
Advance

★
\$25
@ Door

fri. sept 23rd 6-9pm

Bring your own food ★ Cash Bar

the **RIVER ROOM** at the
new castle senior center

Sponsored by



COBBLESTONES Published weekly. Emailed every Sunday morning to over 630 residents and neighbors in the tri-state area and others nationwide with ties to our community and its history. Another 250 plus view the Cobblestones Facebook page weekly.
Supported by **SUBSCRIPTIONS/DONATIONS** @ \$15 per year (more if you wish). Please make check payable to: Ted Joslin - 112 Delaware Street New Castle DE 19720.
Very economical advertising rates available. Thank You